



For Immediate Release
Stephanie Hazzard, Exhibition Manager
sahazzard@theartcenter.org
586-469-8666

August 16th, 2023

FOR IMMEDIATE RELEASE

FALL ANNUAL ARTIST CHOICE SHOW RETURNING TO ANTON ART CENTER

Mount Clemens, MI – The Anton Art Center is excited to announce the *Annual Artist Choice Show* art competition and exhibition, with artwork submissions due at the Anton Art Center on August 29th from 12-5pm, to be followed by the exhibit on September 9 through October 10, 2023.

This annually anticipated event will feature a collection of juror-selected artworks created by talented new and existing members of five prominent art organizations in Macomb County: the Lakeside Palette Club of St. Clair Shores, Mount Clemens Art Association, Romeo Guild of Art, Shelby Township Fine Art Society, and Warren Tri-County Fine Arts, Inc.

Interested artists may find the exhibition details and entry form online at www.theartcenter.org/artist-opportunities and they may enroll or renew a membership by contacting an artist group liaison listed online at www.theartcenter.org/exhibit-philosophy. Artists are *not* required to be a resident of the cities listed in the group names to join and is open to all media types - all are welcome!

The guest juror is artist Laura Whitesides Host, who will carefully evaluate the submissions for their originality, composition, technique, intention, and presentation. This competition and exhibition offers everyone an opportunity to explore the variety of compelling works of accomplished artists in the region.

The show will be open to the public at the Anton Art Center, providing attendees with a culturally enriching experience. “Local artists look forward to the *Annual Artist Choice Show*, specifically for the flexibility it offers by allowing them to submit their best new artwork, regardless of any particular theme.” shares Stephanie Hazzard, Exhibition Manager at the Anton Art Center. “The five artist groups each have a lot of talent, so the opportunity to see the best of their work all in one place is something you don’t want to miss.” The Anton Art Center is well known for its dedication to supporting and nurturing artists, making it an ideal setting for this fusion of creativity.

An Opening Reception and Awards Announcement is scheduled for Saturday, September 9 from 2-4pm. This event allows the community to directly interact with the artists, gaining insights into their processes and inspiration for their artistic endeavors. This exhibition aims to celebrate the art community's talent and diversity, bringing together art enthusiasts, creators, and admirers alike.



For Immediate Release
Stephanie Hazzard, Exhibition Manager
sahazzard@theartcenter.org
586-469-8666

For questions or information, visit www.theartcenter.org or call 586-469-8666. The Anton Art Center is a registered 501(c)(3) nonprofit organization located at 125 Macomb Place, Mount Clemens, Michigan, with a mission to enrich and inspire people of all ages through the arts. The Anton Art Center is open for regular business hours Tuesday through Saturday from 10am-5pm; admission is free and open to the public, and the facility is handicap accessible. Metered lot and street parking is available; free parking on weekends.

The Anton Art Center (AAC) was founded in 1969 in the historic Carnegie Library building in walkable downtown Mount Clemens, Michigan. The AAC aims to build an open community around creative expression by presenting a wide array of programming to appeal to diverse audiences, providing support for the arts and becoming a focal point for arts programming, and working towards inclusion, diversity, equity, and access in all that we do. Our mission is to enrich and inspire people of all ages through the arts. Our funders include the Community Foundation for Southeast Michigan, the Kresge Foundation, Michigan Arts and Culture Council, the Erb Family Foundation, and the National Endowment for the Arts.

###

Sample images



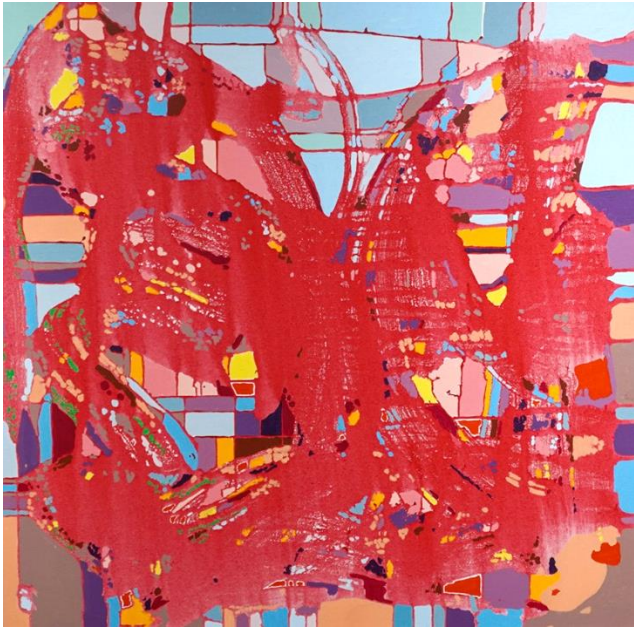
A Joyful Place by Christina Haylett



Gallery view.



For Immediate Release
Stephanie Hazzard, Exhibition Manager
sahazzard@theartcenter.org
586-469-8666



Light and Airy by Jan Filarski



Paper Valley by Fay Akers



Honey Crisp Twist by Susan Kwolek



River Swimmer by Barbara Clay